




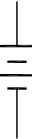


APC Easy UPS On-line

Sheet No.	Component /Detail	Description
1	Drawing Guide	APC Easy UPS On-line Drawing Guide
2	Isometric Views	APC Easy UPS On-line Isometric View
3	General Arrangement -Rack mount	APC Easy UPS On-line General Arrangement-Rack inatallation
4	System One Line Diagram	APC Easy UPS On-line System Onleline Diagram

LEGEND			
SYMBOL	DESCRIPTION	SYMBOL	DESCRIPTION
	CIRCUIT BREAKER		AC-DC CONVERTER
	RELAY		DC-AC CONVERTER (INVERTER)
	DC-DC CONVERTER		BATTERY

THIS DRAWING AND SPECIFICATIONS HEREIN ARE THE PROPERTY OF SCHNEIDER ELECTRIC AND SHALL NOT BE COPIED, REPRODUCED OR USED IN WHOLE OR IN PART, AS THE BASIS FOR THE MANUFACTURE OR SALE OF ITEMS WITHOUT WRITTEN PERMISSION FROM SCHNEIDER ELECTRIC. THIS DRAWING IS BASED UPON LATEST AVAILABLE INFORMATION AND IS SUBJECT TO CHANGE WITHOUT NOTICE.

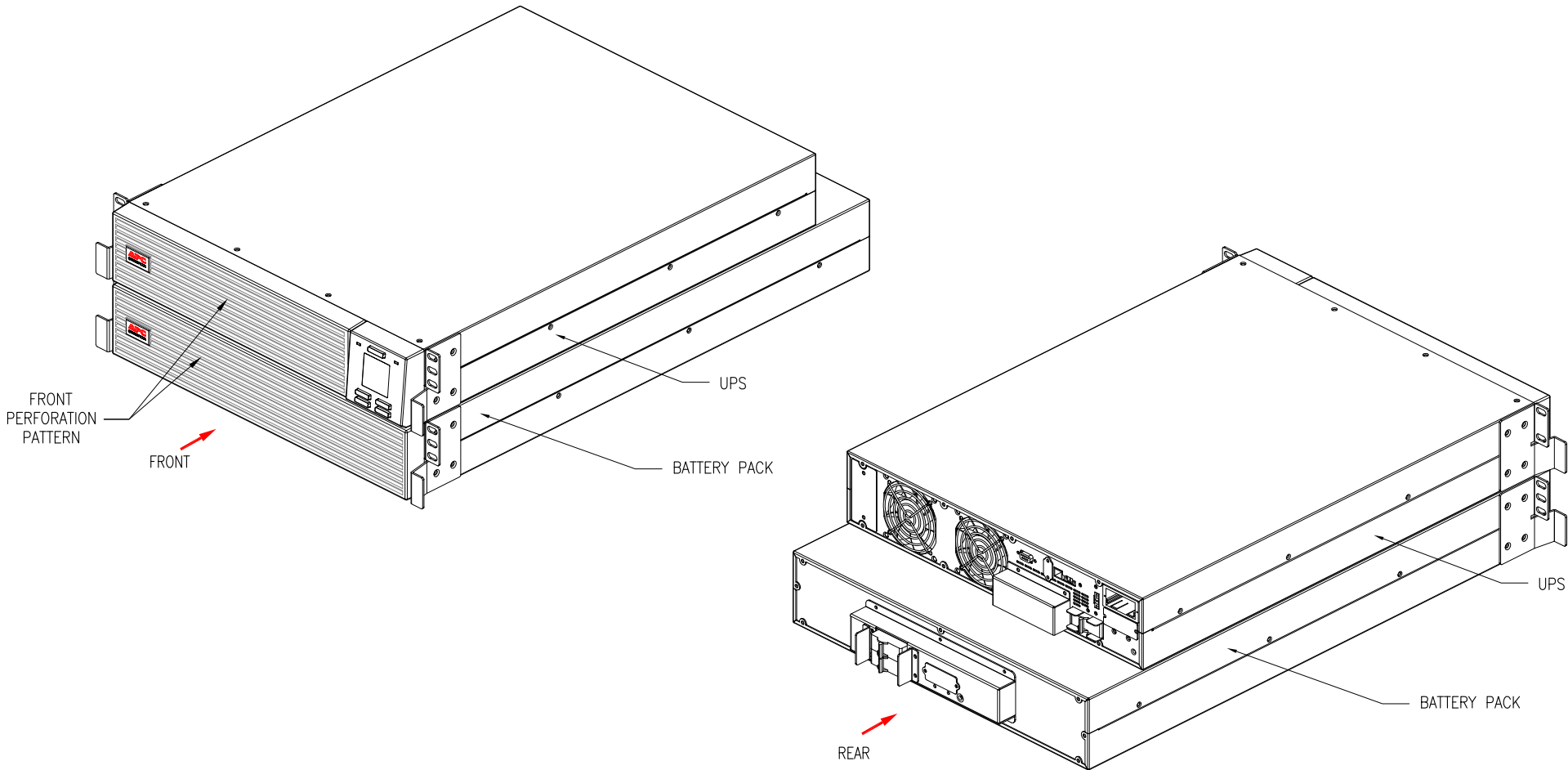


TITLE: APC Easy UPS On-line
(SRVPM5KR+SRV192RBP-7A)/(SRVPM6KR+SRV192RBP-7A)
INPUT: 1PH, 230V (L+N+G), 50-60Hz
OUTPUT: 1PH, 230V (L+N+G), 50/60Hz, 5kVA/6kVA
DRAWING GUIDE
PROJECT: DRAWINGS SHEET 1 OF 4

DWG NO:	SRV5K6RI	REV.	0
DRAWN:	RANJITHA	08-FEB-22	ANGLE
ENGINEER:	TONY CHEN	21-FEB-22	PROJECTION
APPROVED:	FEN WANG	21-FEB-22	N.A

SKU #: SRV5KRI (SRVPM5KRI+SRV192RBP-7A)/
SRV6KRI (SRVPM6KRI+SRV192RBP-7A)

RACK INSTALLATION (ISOMETRIC VIEWS)



NOTES:
1. INSTALLATION SHALL COMPLY WITH ALL APPLICABLE NATIONAL AND LOCAL ELECTRICAL REGULATIONS.
2. REFER TO PRODUCT MANUALS FOR ADDITIONAL DETAILS PRIOR TO INSTALLATION AND SITE PREPARATION WORK.

THIS DRAWING AND SPECIFICATIONS HEREIN ARE THE PROPERTY OF SCHNEIDER ELECTRIC AND SHALL NOT BE COPIED, REPRODUCED OR USED IN WHOLE OR IN PART, AS THE BASIS FOR THE MANUFACTURE OR SALE OF ITEMS WITHOUT WRITTEN PERMISSION FROM SCHNEIDER ELECTRIC. THIS DRAWING IS BASED UPON LATEST AVAILABLE INFORMATION AND IS SUBJECT TO CHANGE WITHOUT NOTICE.



TITLE: APC Easy UPS On-line
(SRVPM5KRI+SRV192RBP-7A)/(SRVPM6KRI+SRV192RBP-7A)
INPUT: 1PH, 230V (L+N+G), 50-60Hz
OUTPUT: 1PH, 230V (L+N+G), 50/60Hz, 5kVA/6kVA
ISOMETRIC VIEWS (UPS+BATTERY PACK)

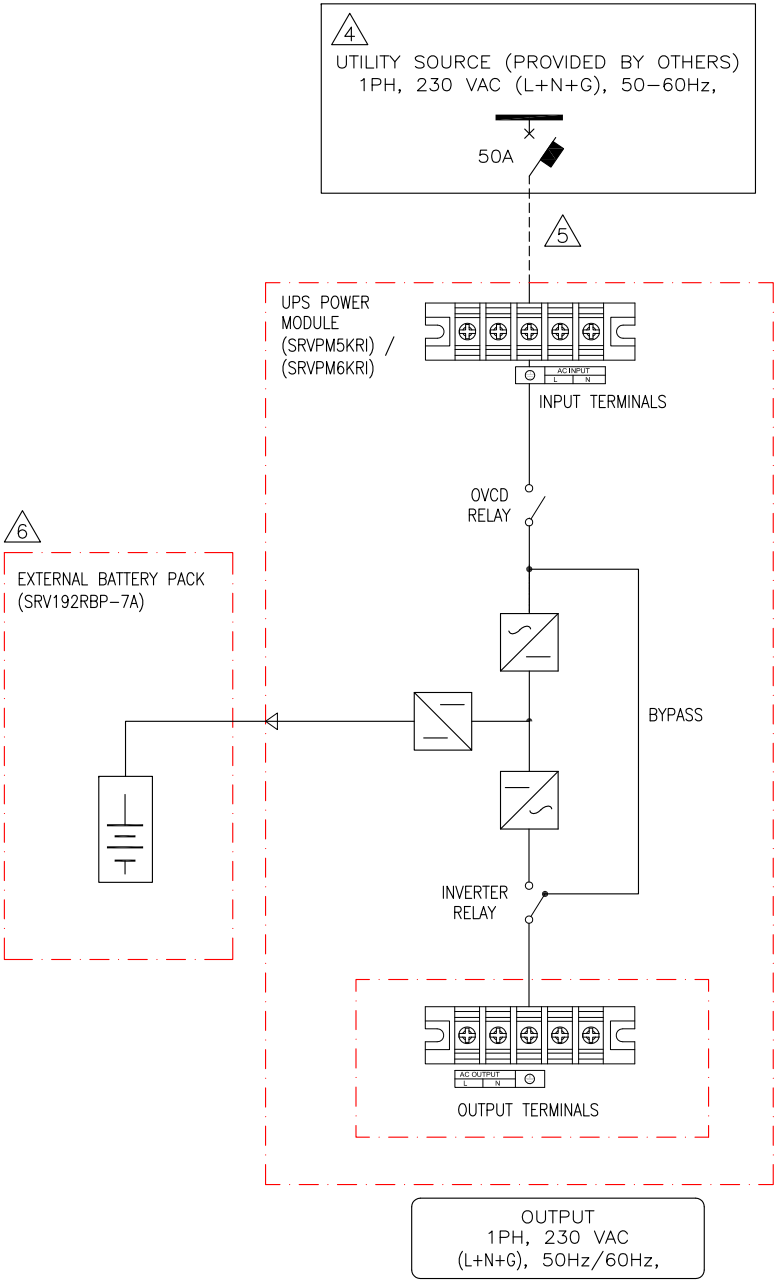
PROJECT: DRAWINGS SHEET 2 OF 4

DWG NO:	SRV5K6RI	REV.	0
DRAWN:	RANJITHA	08-FEB-22	FIRST
ENGINEER:	TONY CHEN	21-FEB-22	ANGLE
APPROVED:	FEN WANG	21-FEB-22	PROJECTION

6

Battery Specification	
Battery Type	12V, 7Ah
Battery Pack Voltage	192V DC

- NOTES:
1. INSTALLATION SHALL COMPLY WITH ALL APPLICABLE NATIONAL AND LOCAL ELECTRICAL REGULATIONS.
 2. REFER TO PRODUCT DOCUMENTATION FOR ADDITIONAL DETAILS PRIOR TO INSTALLATION AND SITE PREPARATION WORK.
 3. DRAWING DEPICTS POWER SYSTEM CONNECTIONS AND IS NOT REPRESENTATIVE OF PHYSICAL LAYOUT. PLEASE REFER TO MECHANICAL DRAWINGS FOR MORE SPECIFIC PHYSICAL DATA.
 - △ 4. UTILITY SOURCE MUST BE 1PH, 230VAC (L+N+G), 50–60Hz PROVIDED BY OTHERS.
 - △ 5. DASHED LINES BETWEEN UTILITY SOURCE & THE UNIT REPRESENTS 10AWG/6mm² WIRE AND NOT PROVIDED WITH THE UNIT.
 - △ 6. ONLY 1 EXTERNAL BATTERY PACK CAN BE CONNECTED WHICH IS PROVIDED WITH THE UPS.
 7. AT NOMINAL VOLTAGE, OUTPUT V THD 1% MAX. FOR FULL LINEAR LOAD, 4% MAX. FOR FULL RCD LOAD.



THIS DRAWING AND SPECIFICATIONS HEREIN ARE THE PROPERTY OF SCHNEIDER ELECTRIC AND SHALL NOT BE COPIED, REPRODUCED OR USED IN WHOLE OR IN PART, AS THE BASIS FOR THE MANUFACTURE OR SALE OF ITEMS WITHOUT WRITTEN PERMISSION FROM SCHNEIDER ELECTRIC. THIS DRAWING IS BASED UPON LATEST AVAILABLE INFORMATION AND IS SUBJECT TO CHANGE WITHOUT NOTICE.

Schneider Electric

TITLE: APC Easy UPS On-line
(SRVPM5KRI+SRV192RBP–7A)/(SRVPM6KRI+SRV192RBP–7A)
INPUT: 1PH, 230V (L+N+G), 50–60Hz
OUTPUT: 1PH, 230V (L+N+G), 50/60Hz, 5kVA/6kVA
SYSTEM ON-LINE DIAGRAM

PROJECT: DRAWINGS SHEET 4 OF 4

DWG NO: SRV5K6RI

DRAWN: RANJITHA 08–FEB–22

ENGINEER: TONY CHEN 21–FEB–22

APPROVED: FEN WANG 21–FEB–22

REV. 0

ANGLE

PROJECTION

NA